



Before you Begin:

Please check to make sure that all tools and materials are present

Tools Needed:

- Pencil or Marker
- Soft Lint-free Cloth
- Stirring Stick
- Paper Plate

Kit Includes: *(shown at right)*

- 1 Tube of CC-605 25ml Epoxy
- 4 Clips
- 4 Bolted Anchor Plates
- 4 Washers
- 4 Wing Nuts



NOTE: Use care when handling all tools and adhesives. Dispose of all used materials properly.

WARNING! When Using Adhesives. Read prior to installation.

ADHESIVES MAY CAUSE ALLERGIC REACTION AND EYE INJURY. AVOID CONTACT WITH SKIN AND EYES. VAPOR MAY IRRITATE EYES, NOSE AND THROAT. USE ONLY IN WELL-VENTILATED AREAS.

Provide adequate ventilation and avoid prolonged or repeated inhalation of vapors. Wear appropriately fitted respirator and/or protective eyewear, if necessary. Do not allow epoxy to come in to contact with skin.

IN CASE OF EYE CONTACT: Flush eyes with water for 15 minutes. Seek immediate medical attention.

IN CASE OF SKIN CONTACT: Wash thoroughly with soap and water. Seek medical attention if necessary.

RESPIRATORY IRRITATION: Get fresh air immediately and seek medical attention if irritation persists.

HARMFUL IF SWALLOWED: Seek immediate medical advice and do not induce vomiting.

NOTE: Bring product label and epoxy tube when seeking medical attention.

KEEP AWAY FROM CHILDREN.

Continued on Page 2

Easy Step-by-Step Installation Instructions

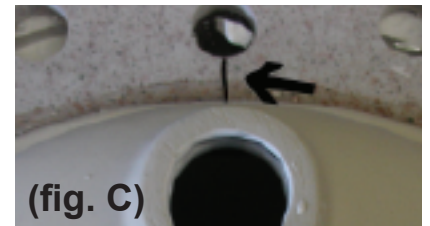
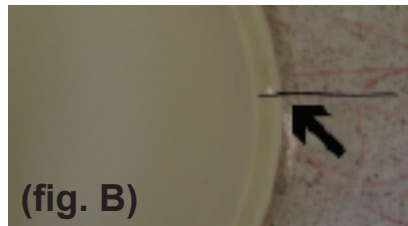
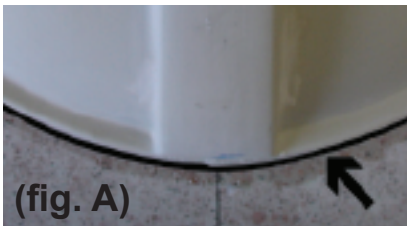
Read all instructions thoroughly before proceeding.

1. Trial Fit

- Check to be sure that the vanity base cabinet is level and properly secured to the wall.
- Wipe cabinet frame with a damp cloth to remove dust particles.
- Trial fit vanity top to ensure correct size and fit. Use care when handling vanity top to prevent damage to stone or cabinet.
- Place vanity top, polished side down on cabinet. Using a damp, lint-free cloth, wipe unpolished surface to remove all dust. Allow surface to dry. This is vital to ensure to a good seal.
- Place undermount sink bowl on the vanity top. Center the bowl over the sink cut-out, moving right and left, front and back until centered.
- Look and feel underneath cabinet to ensure that the sink is centered. Make adjustments to achieve an even reveal around the perimeter of the cut-out.

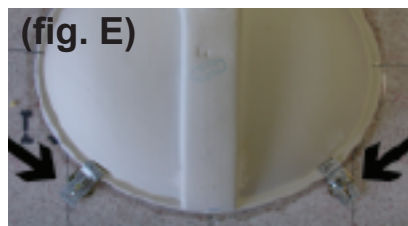
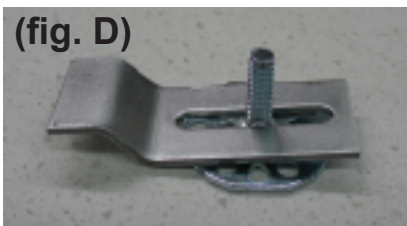
2. Mark Sink Placement

- Use a pencil or marker to draw a line around the sink bowl. (fig. A)
- At the center, front and back of the sink, make a straight line directly on the lip of the sink and carry through to the vanity top. (fig. B & C)



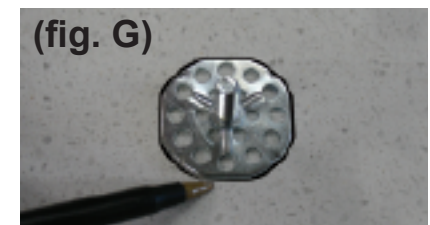
3. Mark Anchor Placement

- Place bolted anchor plates on the vanity top, then slide the clip on to the anchor. (fig. D)
- Position two anchor plates at the front edge of the sink bowl on the left and right. Position the two remaining anchor plates at the back of the sink bowl on the left and right. (fig. E) Make sure the clip is resting on the rim of the bowl. (fig. F)



- Next, hold down bolted anchor plate and remove the clip. Use a pencil or marker to make a circular outline around the anchor plate. Repeat for all anchors. (fig. G)

NOTE: Pencil or marker lines will act as a guide when applying epoxy and aid in setting the bowl accurately.



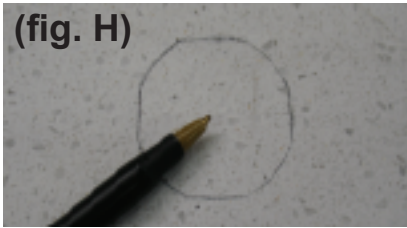
Continued on Page 3

4. Installation of Undermount Sink Kit

- Twist tips off of epoxy tubes. Depress black plunger releasing 2-part epoxy in equal amounts on to a paper plate or any other disposable surface. Quickly mix 2-part epoxy with a stirring stick until completely blended.

- Apply epoxy to the four outlined anchor plate positions on the vanity top. (fig. H)

(fig. H)



- Place the bolted anchor plate in to the epoxy and apply enough pressure until some adhesive is forced through the holes. (fig. I) Do not apply too much pressure, as some adhesive must remain between the vanity top and the anchor plate to ensure a solid bond.

(fig. I)



- Do not wipe away the adhesive that pushed through the holes in the anchor plate. Remove only some excess.

- Work quickly and carefully as the adhesive will begin to set in only a few minutes. **Allow a minimum of one hour for the epoxy to cure. (1 1/2 hours is recommended.)**

- After epoxy has cured for the required time, align the sink using the previously marked guidelines. Place the clip on to the bolted anchor plate, add washer and tighten wing nut to secure the undermount sink bowl. (fig. J)

(fig. j)



5. Finishing

- After you have completed the installation of the undermount sink, please follow vanity top manufacturer's instructions for securing the top to the cabinet, installing backsplashes and seating and caulking seams.

For customer support, please contact us at 866-449-BATH or visit www.miobano.com for more information.